



MAY 2021

MOODY EARLY CHILDHOOD CENTER

THIRD QUARTERLY REPORT



Enrollment



Enrollment

Category	Infant & Toddler	PK
Hispanic	23%	43%
AA	17%	32%
Caucasian	45%	19%
Other	8%	6%
SES	46%	85%
Full Pay	54%	15%

Classrooms	Ages	Number of Classrooms	Enrollment
Infants	6 wks - 23 months	6	54
Toddlers	24 months-36 months	5	43
PreK3	3 - 4 years	6	65
PreK4	4 - 5 years	4	33
Virtual PK	PK3/PK4	1	2/4
GISD	Kindergarten	1	0
Afterschool Care	PK-1 st	3	34

Staff

Moody
Early Childhood
Center



Staff

Demographics

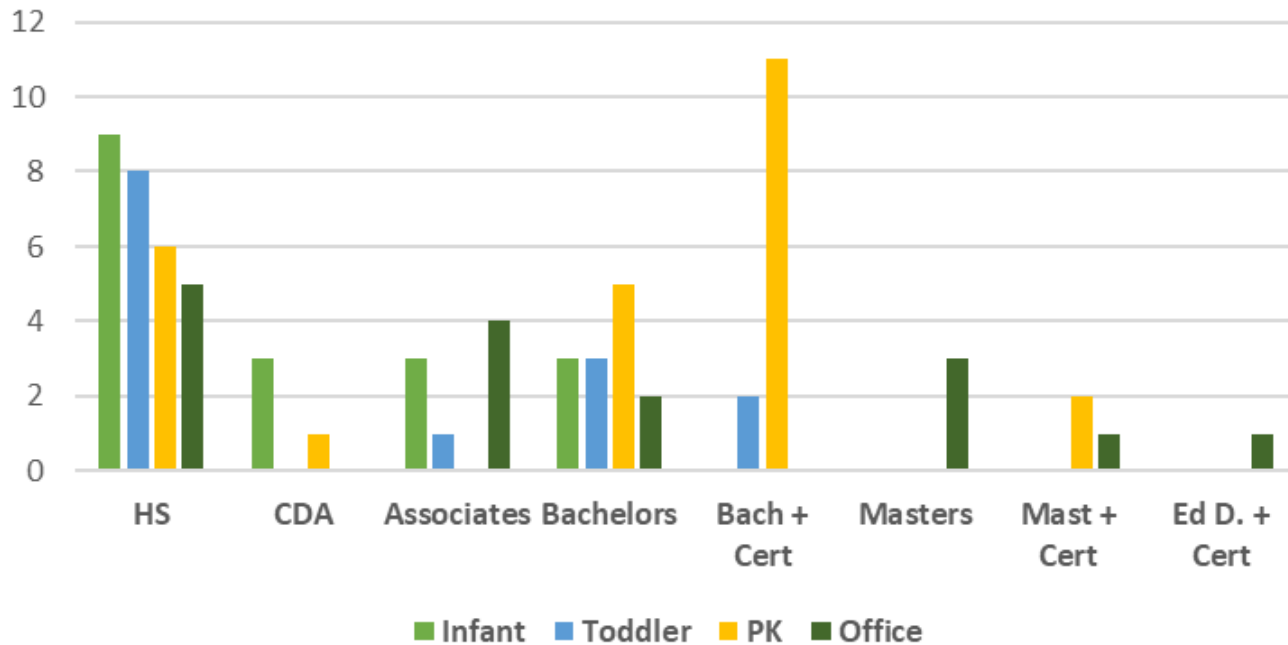
Hispanic - 33%

AA - 22%

Caucasian - 36%

Other - 3%

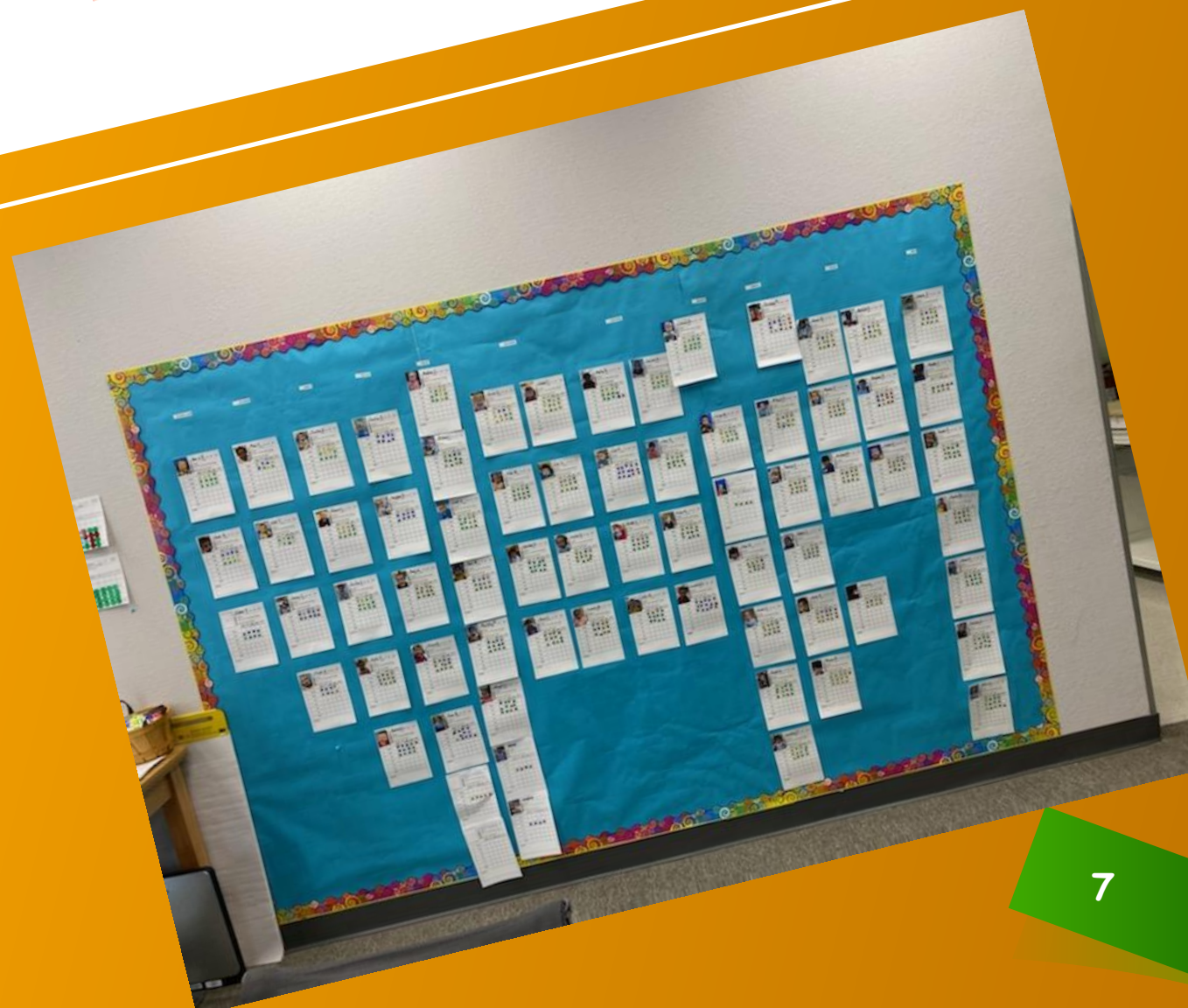
Staff Educational Levels



Academic Performance



Infant/Toddler Data Wall



Academic Performance: IT



Age	6 wks – 5 months				6 - 11 months				12 - 17 months				18 - 23 months				24 - 36 months				36 months+			
	Oct	Jan	Apr	Jul	Oct	Jan	Apr	Jul	Oct	Jan	Apr	Jul	Oct	Jan	Apr	Jul	Oct	Jan	Apr	Jul	Oct	Jan	Apr	Jul
Health & Motor	67	67	100		73	100	100		80	50	73		43	73	90		46	100	100		71	56	100	
Lang & Lit	67	67	100		18	20	56		20	33	55		14	64	70		48	64	82		79	50	79	
Social Emotion	100	83	100		82	80	94		40	92	100		71	83	100		82	100	100		100	72	86	
Cognitive	67	100	100		64	40	76		10	42	64		57	73	80		55	73	93		86	67	100	
Overall	67	83	100		36	75	84		10	17	68		43	64	78		27	73	88		79	44	86	



PK Data Room



Academic Performance: PK3



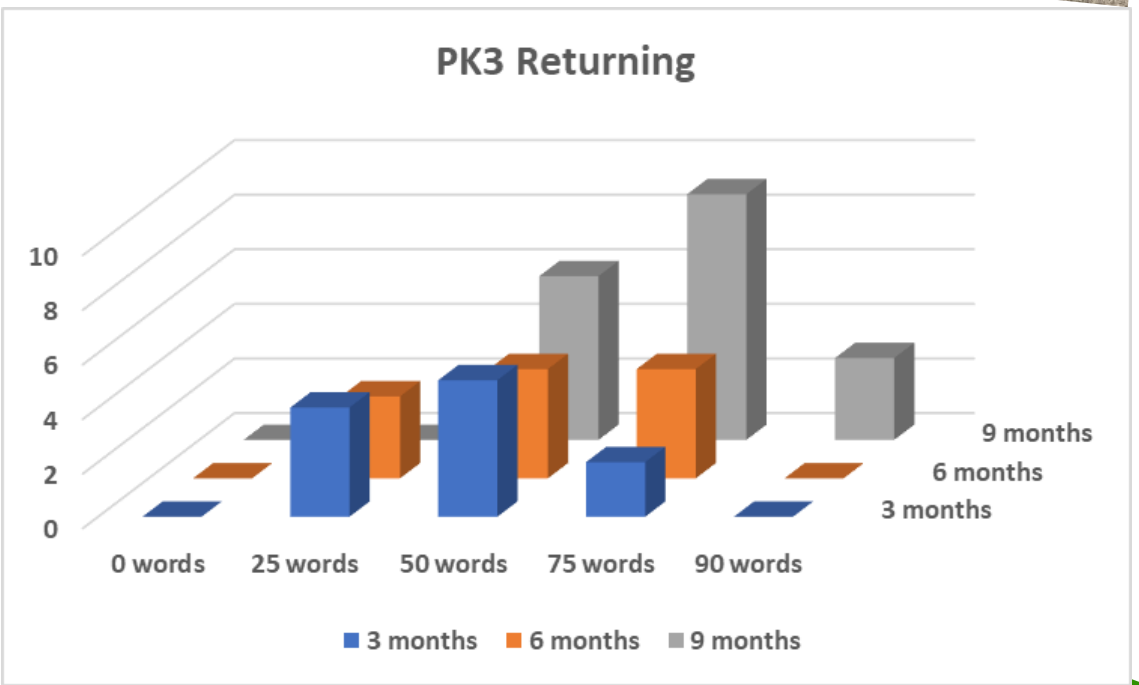
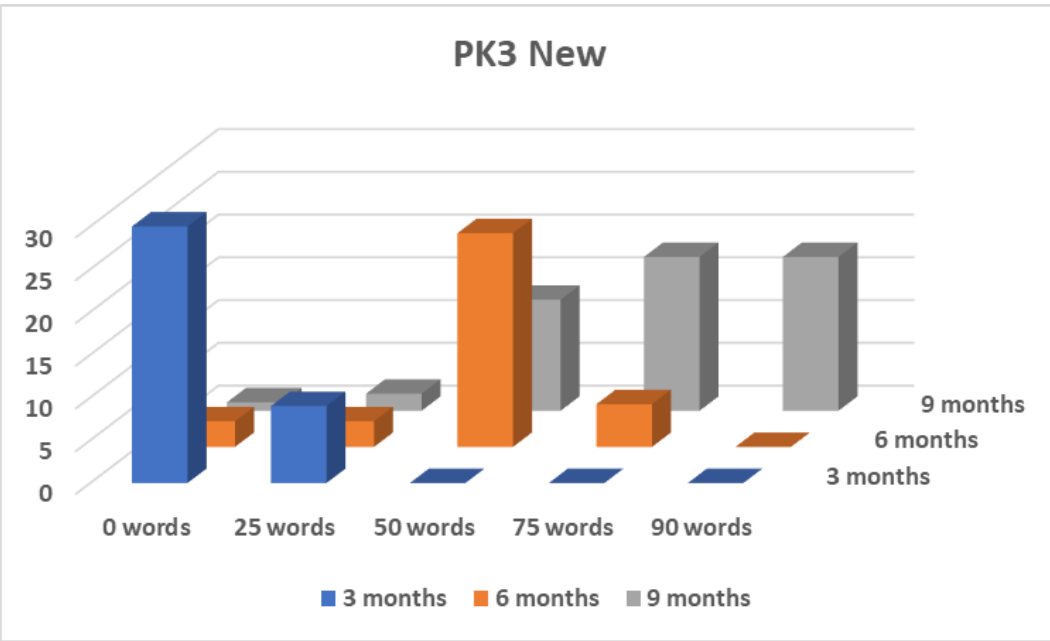
Skills Assessed	1 st Assessment	2 nd Assessment	3 rd Assessment		New Students	Returning Students
Capital Letter (10)	24%	71%	84%		84%	84%
Lower Case (10)	17%	55%	83%		82%	83%
Number (1-5)	34%	64%	90%		87%	94%
Rote Counting (1-15)	30%	80%	90%		87%	94%
Colors (11)	39%	64%	87%		82%	100%
Shapes (6)	59%	85%	95%		93%	100%

Academic Performance: PK4

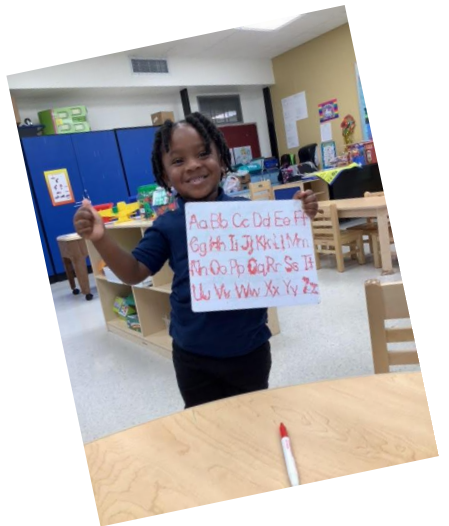


Skills Assessed	1 st Assessment	2 nd Assessment	3 rd Assessment	New Students	Returning Students
Capital Letter (20)	52%	76%	94%	85%	100%
Lower Case (20)	52%	71%	94%	85%	100%
Number (1-10)	55%	65%	94%	92%	96%
Rote Counting (1-30)	48%	85%	80%	73%	93%
Colors (11)	63%	88%	94%	100%	91%
Shapes (6)	82%	91%	100%	100%	100%

Academic Performance: PK3



Academic Performance: PK4




Vocabulary




*80% of Vocab

Class	All	New	Return
PK3	83	80	89
PK4	83	77	86

*100% of Vocab



Class	All	New	Return
PK3	24	22	27
PK4	14	15	14



Student Outcome Goals



Student Outcome Goals: PK3



- **Increase Vocabulary** – By the end of the 2020-2021 school year, 80% of our students will be able to identify vocabulary introduced in the Frog Street curriculum (90 vocabulary cards)

0% Oct 0% Jan 83% April

- **Alphabet Knowledge** – By the end of the 2020-2021 school year, 80% of our students will recognize at least 10 letters especially those in their own name.

24% Oct 71% Jan 83% April

- **Number Recognition** – By the end of the 2020-2021 school year, 80% of our students will recognize the numerals 1-5.

34% Oct 64% Jan 91% April



Student Outcome Goals: PK4



- **Increase Vocabulary** – By the end of the 2020-2021 school year, 80% of our students will be able to identify vocabulary introduced in the Frog Street curriculum (138 vocabulary cards)

0% Oct 0% Jan 83% April

- **Alphabet Knowledge** – By the end of the 2020-2021 school year, 80% of our students will recognize at least 20 letters especially those in their own name.

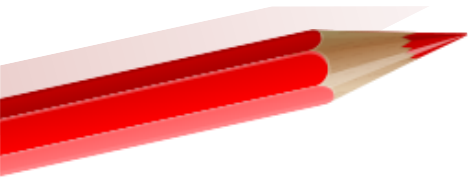
53% Oct 76% Jan 94% April

- **Number Recognition** – By the end of the 2020-2021 school year, 80% of our students will recognize the numerals 1-10.

58% Oct 65% Jan 94% April



Performance Measure: Financial Performance



Performance Measure: Financial Performance

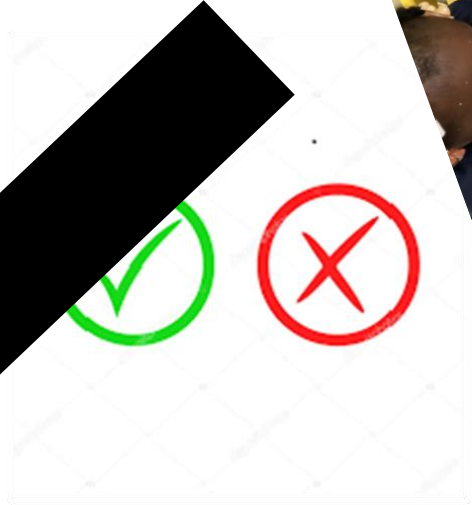
Financial Reporting



Financial Report submitted within 180 days



Unqualified opinion



Free of Instances of Material Weaknesses in Internal Controls



Family & Community Engagement

January		February 04, 2021				March	
Sunday	Monday	Tuesday	Wednesday	Thursday	Friday	Saturday	
	1 IT Weekly Theme Infant/Toddler Weekly Theme Pre-K3 Weekly Theme Pre-K4 Weekly Theme	2 Bring a picnic and enjoy the outdoor ... 10:30am Mom's Online Support Group	3 12:15pm Virtual Parenting Presentation 06:00pm WIC Virtual Gardening	4 100th Day of School! Nutrition Series with United Way Ca ...	5	6 10:30am Mom's Online Support Group	
7	8 Infant/Toddler Weekly Theme Pre-K3 Weekly Theme Pre-K4 Weekly Theme	9 Paint a Mardi Gras Mask WIC Mother's Milk Club 10:30am Mom's Online Support Group	10 Progress Reports Come Out 12:15pm Virtual Parenting Presentation 06:00pm WIC Virtual Gardening	11	12 Valentines Day Party	13 10:30am Mom's Online Support Group	
14	15 Infant/Toddler Weekly Theme Pre-K3 Weekly Theme Pre-K4 Weekly Theme	16 Paint a Mardi Gras Flower Pot and P ... 10:30am Mom's Online Support Group	17 12:15pm Virtual Parenting Presentation 06:00pm WIC Virtual Gardening	18	19	20 10:30am Mom's Online Support Group	
21 Teacher Conferences (PreK-3/4)	22 Infant/Toddler Weekly Theme Pre-K3 Weekly Theme Pre-K4 Weekly Theme	23 WIC Mother's Milk Club 10:30am Mom's Online Support Group	24 12:15pm Virtual Parenting Presentation 06:00pm WIC Virtual Gardening	25	26	27 10:30am Mom's Online Support Group	
28							

Goal Progress Measure #1

- Parent and Community Meetings
 - Professional Advisory (Oct & Mar)
 - Community Advisory (USI and CoCare wkly)
 - Parent Advisory (Oct & Feb)
 - Area Childcare Providers (SMART Family)
 - Program and Early Childhood Research (Dec)
 - Family Engagement Nights (Wkly events-Zoom)
 - Academic Areas – Literacy, Math, Science Fair, Development
 - Parenting – Triple P, Parent Café, Incredible Years
 - Social Emotional – Examples: Tantrums, Biting, Sharing, etc.
 - Community Resources – Little Red Box, Food Bank, Budgeting/Financial Literacy

Goal Progress Measure #2

- Parent Communication of Student Assessment Performance
 - Daily Folders
 - Parent Conferences
 - Phone Calls
 - Texts, and Emails
 - Video Conferencing
 - Development Checklists – Monthly
 - Report Card – 9 weeks



Family & Community Engagement

- Galveston ISD
- United Way
- Teen Health
 - Pediatric Clinic OPEN!
- Ball High School
 - BESST
- UTMB
 - OT, Pediatric Psychiatry
 - Motor/Sensory Lab
 - CapStones
- SMART Family Literacy
- Area Childcare Directors
- Galveston Diaper Bank
- Galveston Own Farmer's Market
 - Victory Garden
- Little Red Box
- Galveston Houston Immigration Representation Project (GHIRP)



United Way of Galveston



USI | URBAN STRATEGIES, INC.
Families at the Center of Results



- Urban Strategies
 - Open House
- Boys and Girls Club
- WorkSource Solutions
- Galveston Urban Ministries
- Family Service Center
- BBVA
- Gulf Breeze
- Galveston Food Bank
- St. Vincent's House
- Ironman
- 3919 Enterprises
- Galveston Children's Museum
- UpBring Head Start
- WIC
- Steals and Deals





Thank You!

Karin Miller, Executive Director
Antonio Ford, Deputy Executive Director